

Carolinas Wind Study

2013 NCTPC/SCRTP Joint Study Scope

Purpose of Study

The purpose of this study is to assess the North Carolina Transmission Planning Collaborative (“NCTPC”) and South Carolina Regional Transmission Planning (“SCRTP”) companies’ transmission systems’ reliability and quantify the transmission system impacts of various wind injection sites along the Carolinas’ coast. The NCTPC is being represented by Duke Energy Carolinas (“Duke”) and Duke Energy Progress (“Progress”). The SCRTP is being represented by South Carolina Electric and Gas (“SCEG”), and South Carolina Public Service Authority (“SCPSA”). The wind injection sites to be tested will be determined based on the latest available data and studies of off-shore wind along the Carolinas’ coast.

The NCTPC and SCRTP stakeholder group members will have the opportunity to provide input on all the study scope elements as the study activities progress.

Overview of the Study Process Scope

The scope of the proposed study process will include the following steps:

1. Study Assumptions

- Study assumptions selected (MW injection levels, sinks, sink allocation, study years, load levels, etc.)

2. Study Criteria

- Establish the criteria by which the study results will be measured

3. Case Development

- Develop the models needed to perform the study based on wind injection sites and study assumptions)

4. Study Methodology

- Determine the methodologies that will be used to carry out the study

5. Technical Analysis and Study Results

Perform the technical analysis and produce the study results. Power flow analyses will be performed based on the assumption that thermal and voltage limits will be the controlling limits for system reliability. This study will be performed as a high-level screening analysis, with additional, more detailed, analysis required if a request for interconnection is made. Any additional analyses required in response to an interconnection request will be performed in accordance with the interconnecting company’s interconnection procedures.

6. Assessment and Problem Identification

- Evaluate the results to identify problems/issues

7. Solution Development

- Identify potential solutions to the identified problems/issues
- Perform a financial analysis (e.g., cost, cash flow, present value) for each proposed solution to enable a cost comparison between the various wind injection sites

8. Report on the Study Results

- Combine the study scope and assessment results into a report

Each of these study steps is described in more specific detail below.

Study Assumptions

- The year to be studied (study year) will be 2020 (or 2024). A 2020 (or 2024) summer peak, 2019/20 (or 2024/25) winter peak, and 2020 (or 2024) shoulder case will be used to evaluate the impact of various wind injection sites.
- Generation will be dispatched for each Participant in the study cases to meet that Participant's peak and shoulder load in accordance with the designated dispatch order. Participants will also provide generation down scenarios for their resources, as requested (e.g., generation outage with description of how generation will be replaced, such as by that Participant's dispatch orders).
- PSS/E and/or MUST will be used for the study.
- Load growth assumptions will be in accordance with each Participant company's practice.
- Generation, interchange, and other assumptions will be coordinated between the Participant companies as needed. The 2013 series LTSG cases for 2020 (or 2024) summer and 2019/20 (or 2024/25) winter will be used as the starting points for study cases and interchange development.
- A shoulder peak is defined as 70-80% of summer peak load conditions. Each Participant company will determine the appropriate load and generation dispatch to represent their system.
- The study team will use the three coordinated study cases and any requested generation down cases to analyze the existing transmission systems to determine if any reliability criteria violations are created due to the various wind injection sites at the tested MW levels. The results of this analysis will be included in the study report.

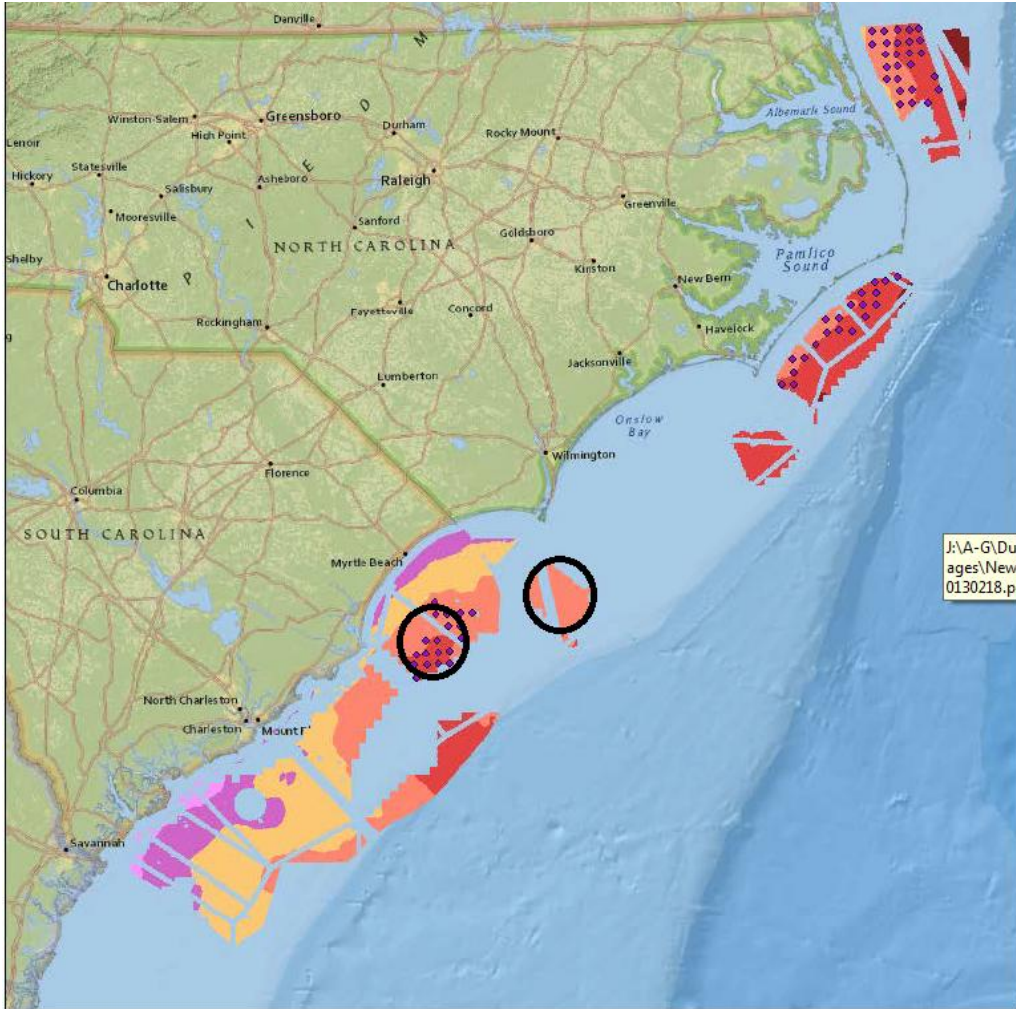
Study Criteria

The study criteria with which results will be evaluated will be established, promoting consistency in the planning criteria used across the systems of the Participants, while recognizing differences between individual systems. The study criteria will include the following reliability elements:

- NERC Reliability Standards
- Individual company criteria (voltage, thermal, stability, short circuit and phase angle)

Case Development

- The latest LTSG models will be used as a starting point for the study cases to be used by the study team in their analyses. Systems external to Duke, Progress, SCEG, and SCPSA will come directly from the LTSG model.
- The study cases will include the detailed internal models for Duke, Progress, SCEG, and SCPSA and will include transmission additions planned to be in-service for the given year (i.e. in-service by 2020 summer and 2019/20 winter). The detailed internal models will be based on the latest publicly available data for each system, i.e, data that has been included in the annual FERC 715 filing.
- The Participants will coordinate interchange which will include all confirmed long term firm transmission reservations with roll-over rights applicable to the study year(s).
- Duke, Progress, SCEG, and SCPSA will each create any requested generation down cases from the coordinated study cases and share the relevant cases with each other.
- Wind source locations will be assumed to be in the locations identified on the map below, designated as the Wilmington offshore site (easternmost site) and the Myrtle Beach offshore site (westernmost site). The onshore collection points will be determined by the participants and identified from existing system substations and lines. Facilities required to deliver energy from the wind turbines to the onshore collection point identified by the participants will not be included or identified as part of this study.



<p>5600-MW SCENARIO FINAL OFFSHORE SITES</p>	<p>Legend</p> <ul style="list-style-type: none"> ◆ Offshore Wind Site Mean Annual Speed at 100 m m/s < 5.75 		<ul style="list-style-type: none"> 7.00 - 7.25 7.25 - 7.50 7.50 - 7.75 7.75 - 8.00 		<p>Product</p> <p>Site</p> <p>Screening</p> <p>0 10 20 30 Miles</p> <p>0 10 20 30 Kilometers</p> <p>Originator</p>
	<p>The map was made on 10/18/2018. The screen was printed on 10/18/2018. All rights reserved. No part of this map may be reproduced without the written permission of the originator.</p>				<p>0 10 20 30 Miles</p> <p>0 10 20 30 Kilometers</p> <p>Originator</p>

Scenarios to be Studied

Table 1 will provide the basis for the amount of power delivered to the alternative onshore collection points. In all cases, it will be assumed that 2000 MW of nameplate wind capacity will be injected into the onshore collection sites, as shown in Table 1.

Scenario	Onshore Collection Site	Nameplate MW into Collection Site	Nameplate MW		Description
			Sink	Sink	
1	Wilmington	1000	DUKE 600	PROGRESS 400	All output sinks in host state
	Myrtle Beach	1000	SCEG 500	SCPSA 500	
2	Wilmington	2000	DUKE 940	PROGRESS 620	All wind connects in NC
	Myrtle Beach	0	SCEG 220	SCPSA 220	
3	Wilmington	0	DUKE 940	PROGRESS 620	All wind connects in SC
	Myrtle Beach	2000	SCEG 220	SCPSA 220	

Table 1

Each scenario will address an amount of power delivered from the installed wind capacity in the summer peak, winter peak, and shoulder seasons. The amount of power actually delivered in each case will be the nameplate capacity at the site multiplied by the capacity adjustment factors shown in Table 2.

	Summer Peak	Winter Peak	Shoulder
Wilmington	30%	50%	100%
Myrtle Beach	33%	56%	100%

Table 2

The shoulder case will assume 70% of annual peak demand. The percentages above are based on the Carolinas Wind Integration Case Study (COWICS), Table 7, page 28, with the Wilmington site capacity adjustment modified slightly downward from the Myrtle Beach values. The Wilmington site was not included in the COWICS study.

A more detailed description of the scenarios to be studied is provided below.

Scenario 1: Independent Site Development

- The 1000 MW (nameplate capacity) from the offshore wind resources at each site, as modified to reflect seasonal capacity adjustments in Table 2, is injected at NC1 substation (to be determined for NC delivery) and SC1 substation (to be determined for SC delivery) and transmitted to the respective states.
- The sink location(s) of the delivered MW of wind energy from each wind site will sink into the state loads of the state in which the wind energy is delivered, in proportion to the load ratio share of the study participants in that state. For example, NC and SC will each receive the output of 1000 MW of nameplate wind capacity, with the SC MW being delivered 50% each to SCPSA and SCEG, while the equivalent output of 1000 MW of nameplate capacity delivered to NC will be split 60% to Duke, and 40% to Progress.

Scenario 2: Delivery of all output to NC

- The combined 2000 MW of nameplate wind capacity from the offshore wind resources as modified to reflect seasonal capacity, will be injected at NC1 substation (or alternative NC site to be determined for NC delivery) and transmitted to participants' systems.
- The sink location(s) of the 2000 MW of nameplate capacity wind energy will be split among the four participants' systems according to overall load ratio share, 47% to Duke, 31% to Progress, and 11% each to SCPSA and SCEG. The 22% share for SCPSA and SCEG will be reflected as firm interchange between the NC and SC systems.

Scenario 3: Delivery of all output to SC

- The combined 2000 MW of nameplate wind capacity from the offshore wind resources as modified to reflect seasonal capacity, will be injected at SC1 substation (or alternative SC site to be determined for SC delivery) and transmitted to participants' systems.
- The sink location(s) of the 2000 MW of nameplate capacity wind energy will be split among the four participants' systems according to overall load ratio share, 47% to Duke, 31% to Progress, and 11% each to SCPSA and SCEG. The 78% share for Duke and Progress will be reflected as firm interchange between the SC and NC systems.

Study Methodology

Initially, power flow analyses will be performed based on the assumption that thermal and voltage limits will be the controlling limits for the reliability plan. This study will be performed as a high-level screening analysis, with additional, more detailed, analysis required if a request for interconnection is made. Any additional analyses required in response to an interconnection request will be performed in accordance with the interconnecting company's interconnection procedures.

- Duke, Progress, SCEG, and SCPSA will exchange contingency and monitored element files so that each can test the impact of the other systems' contingencies on its transmission system.

Technical Analysis and Study Results

The technical analysis will be performed in accordance with the study methodology. Results from the technical analysis will be reported throughout the study area to identify transmission elements approaching their limits such that all Participants are aware of potential issues and appropriate steps can be identified to correct these issues, including the potential of identifying previously undetected problems.

Duke, Progress, SCEG, and SCPSA will report results throughout the study area based on:

- Thermal loadings greater than 90%.
- Voltages less than individual company criteria.

Assessment and Problem Identification

Duke, Progress, SCEG, and SCPSA will each run their own assessments using their own internal planning processes. Each Participant's reliability criteria will be used for their transmission facilities. Duke, Progress, SCEG, and SCPSA will each document the reliability problems resulting from their assessments. These results will be reviewed and discussed with NCTPC and SCRTP stakeholder group members for feedback.

Potential Solution Development

- The study team will develop potential solution alternatives to the identified reliability problems. Potential joint solutions will also be discussed and evaluated as needed.
- Duke, Progress, SCEG, and SCPSA will test the effectiveness of any potential joint solution alternatives using the same cases, methodologies, assumptions and criteria described above.
- The study team will compare alternatives and select the preferred solution alternatives that provide a reliable and the most cost effective transmission solution to meet the customers' needs while prudently managing the associated risks.
- Duke, Progress, SCEG, and SCPSA will develop rough, planning-level cost estimates for the preferred solution alternatives.
- The preferred solution alternatives developed by the study team will be reviewed and discussed with the NCTPC and SCRTP stakeholder group members for feedback.

Report on the Study Results

The study team will compile the study scope and assessment results into a report for review and discussion with the NCTPC and SCRTP stakeholder group members to solicit their input. The final report will include a comprehensive summary of all the study activities as well as the recommended potential transmission improvements including estimates of costs. Study results will be made available through posting on the respective NCTPC and SCRTP websites.

Study Schedule

The tentative target date for submittal of the final report to the NCTPC and SCRTP stakeholder groups is August 31, 2013.